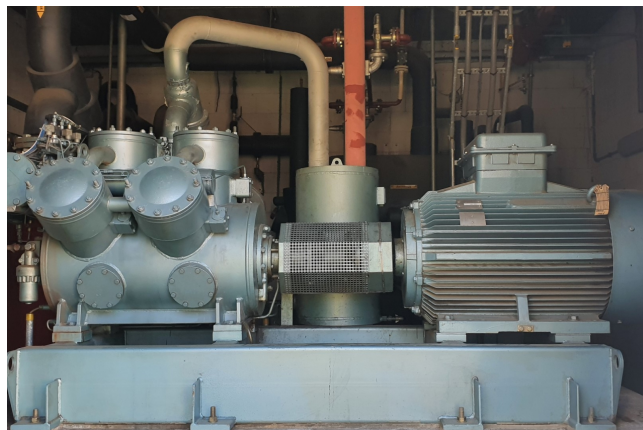


Grasso RC 612E

Specifications

Brand	Grasso
Type	RC 612E
Refrigerant	NH 3 (ammonia)
kW at +10°C/+40°C	990,1
kW at 0°C/+40°C	662,8
kW at -5°C/+40°C	532,3
kW at -10°C/+40°C	418,5
On steel base frame	✓
Pressure safety switches	✓
Hp/Lp/Op	
Pressure gauges	✓
Hp/Lp/Op	
Oil separator	✓
Remarks	y.o.b. 2000
Sizes	3050x1450x2000 mm
Stock	1



Description

Used Grasso RC 612E

Used Grasso RC 612E reciprocating compressor direct driven by Schorch electromotor 50 Hz - 200 kW - 1490 RPM. Complete with oil separator 110 ltr and control panel with Siemens Simatic OP7 controller.

*Why choose for HOSBV? Were not only the largest used refrigeration specialist in Europe, but also, we deliver all equipment including an extensive test, warranty and industrial cleaning.

*Optional we can also arrange the logistics.

